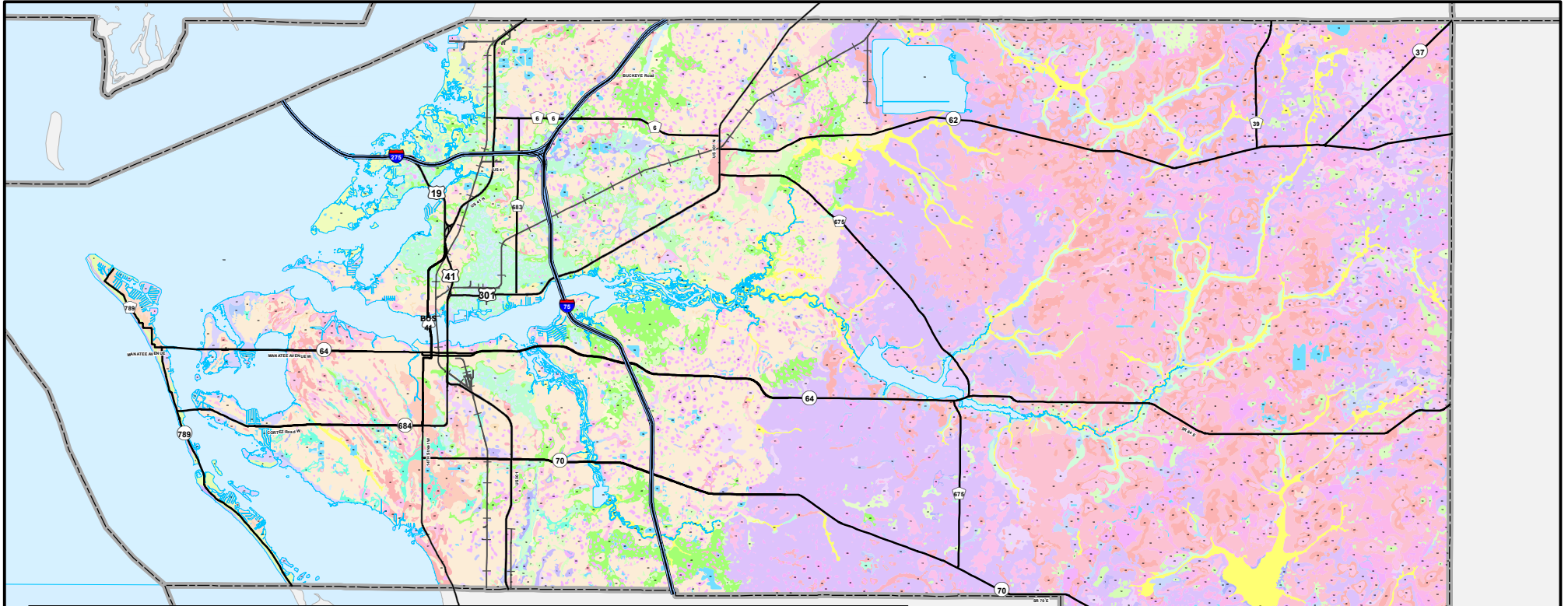
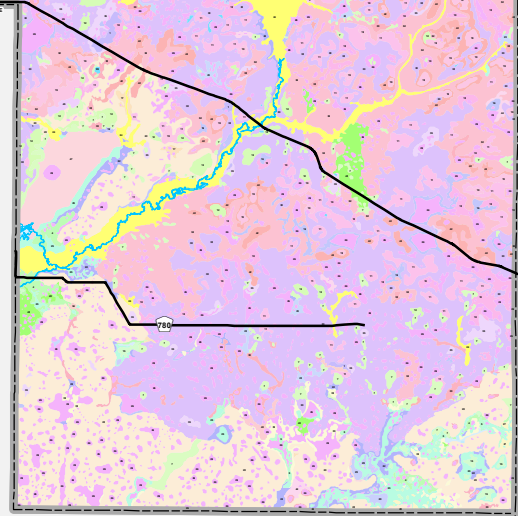


GENERAL SOILS

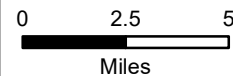


Soil Survey		
SOIL_NAME		
Adamsville variant fine sand	Duette fine sand, 0 to 5 percent slopes	Parkwood variant-Chobee, limestone substratum-Parkwood complex
Beaches	EauGallie fine sand	Pinellas fine sand
Bradenton fine sand	Estero muck	Pits and Dumps
Bradenton fine sand, limestone substratum	Felda fine sand	Pomello fine sand, 0 to 2 percent slopes
Broward variant fine sand	Felda-Palmetto complex	St. Johns fine sand, 2 to 5 percent slopes
Canaveral fine sand, 0 to 5 percent slopes	Felda-Wabasso association, frequently flooded	St. Johns-Myakka complex
Canaveral sand, filled	Floridana fine sand	Tavares fine sand, 0 to 5 percent slopes
Canaveral sand, organic substratum	Floridana-Immokatee-Okeelanta association	Tavares fine sand, cemented substratum, 2 to 5 percent slopes
Canova, Anclote, and Okeelanta soils	Gator muck	Tomoka muck
Cassia fine sand	Hallandale fine sand	Wabasso fine sand
Cassia fine sand, moderately well drained	Manatee mucky loamy fine sand	Wabasso fine sand, rarely flooded
Chobee loamy fine sand	Myakka fine sand, 0 to 2 percent slopes	Wabasso variant fine sand
Chobee variant sandy clay loam	Myakka fine sand, 2 to 5 percent slopes	Water
Delray complex	Myakka fine sand, shell substratum	Waters of the Gulf of Mexico
Delray mucky loamy fine sand	Myakka fine sand, tidal	Wauchula fine sand
Delray-EauGallie complex	Okeelanta muck, tidal	Waveland fine sand
Delray-Pomona complex	Ona fine sand, orstein substratum	Wulfert-Kesson association
	Orlando fine sand, moderately wet, 0 to 2 percent slopes	Zolfo fine sand, 0 to 2 percent slopes
	Orsino fine sand, 0 to 5 percent slopes	Zolfo fine sand, 2 to 5 percent slopes
	Palmetto sand	



Numbers = Soil Code

COMP PLAN MAP B



This map is provided for general reference and is not warranted in any way. Errors from non-coincidence of features from different sources may exist. The Manatee County BOCC shall be held harmless for inappropriate or unintended uses of the information.